

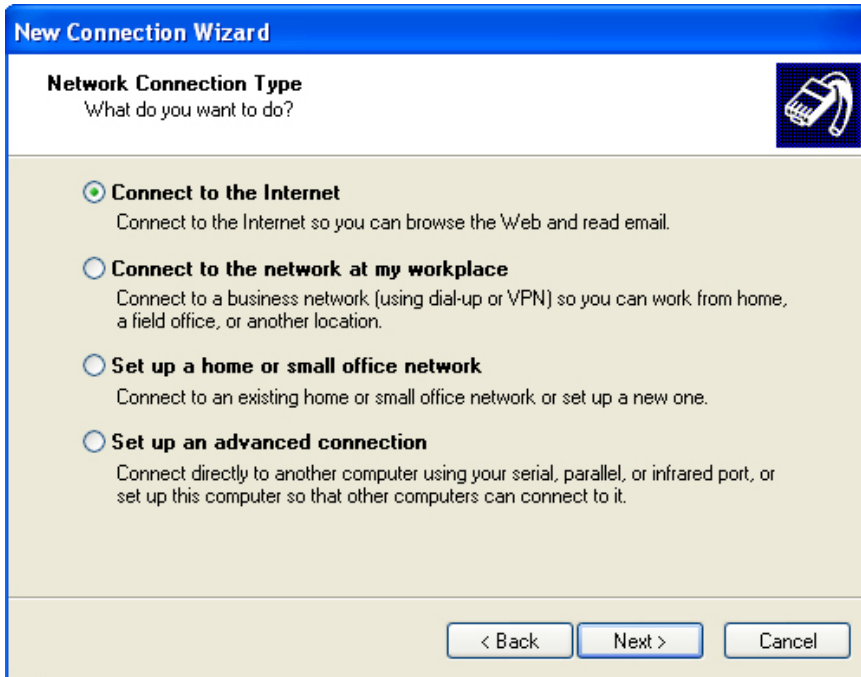
## Adding a New Network Connection

In some cases, the Dashboard software provided by your mobile SIM provider does not recognize your modem card. We are working with the various modem card manufacturers and mobile ISP's to provide a satisfactory solution to this problem, but in the interim period, it is possible to configure your Internet access manually using the Windows New Network Wizard. The process for Windows 2000 is shown below, it is very similar in Windows XP.

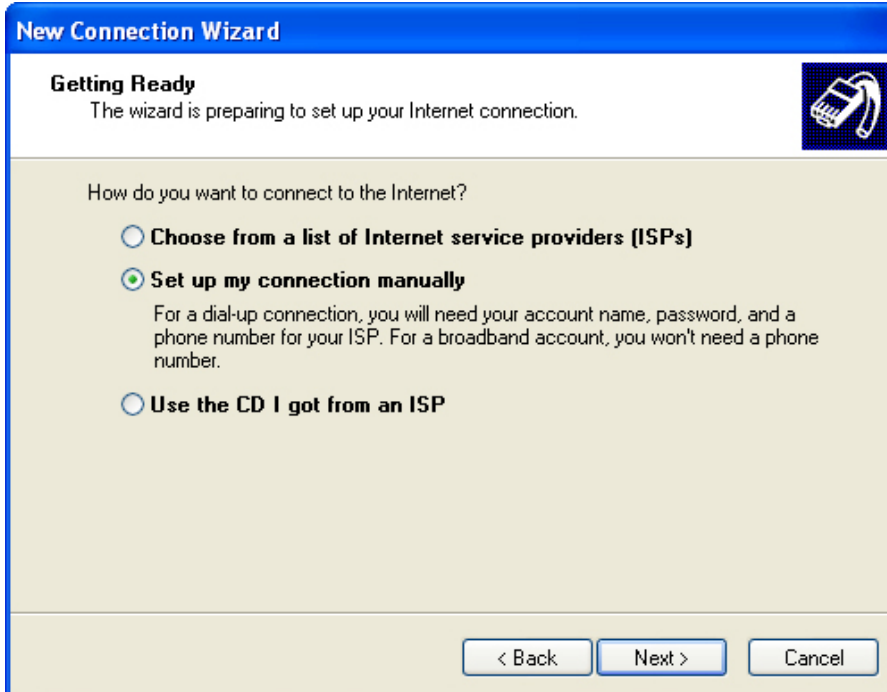
From the "Network Connection" icon in your device manager, click "File and chose New Connection" from the drop down menu. The following dialog should appear..., click "Next"



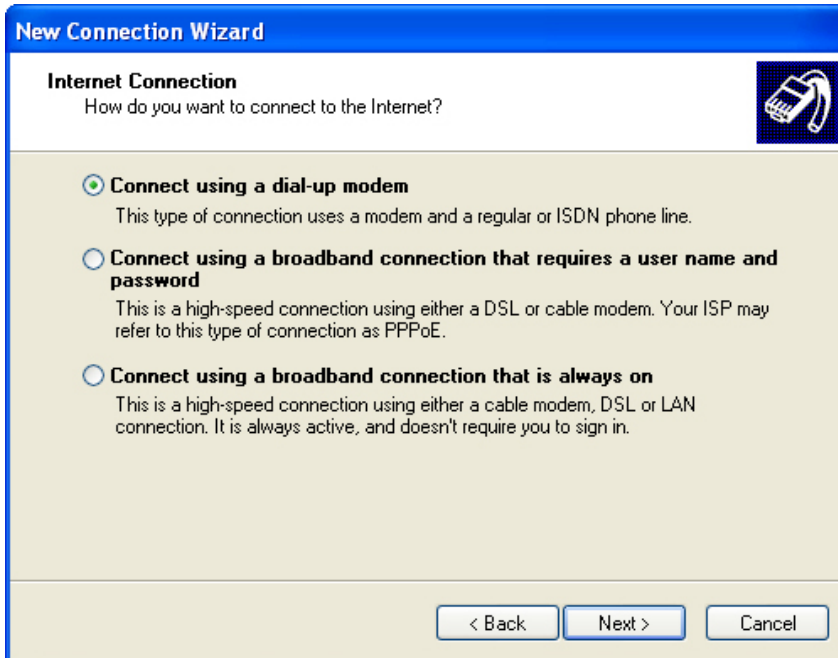
Select "Connect to the Internet" and click "Next"



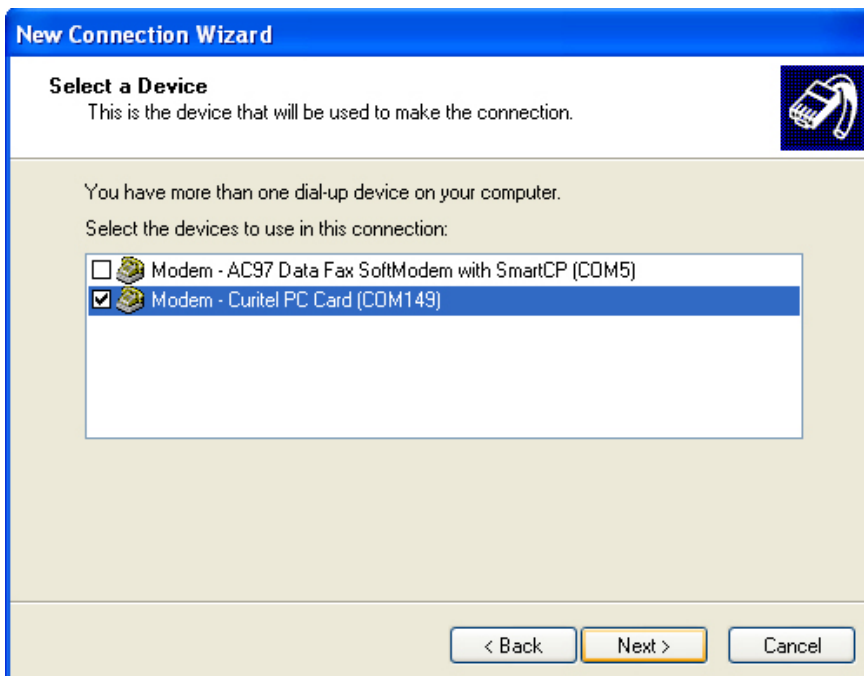
Select "Set up my connection manually" and click "Next"



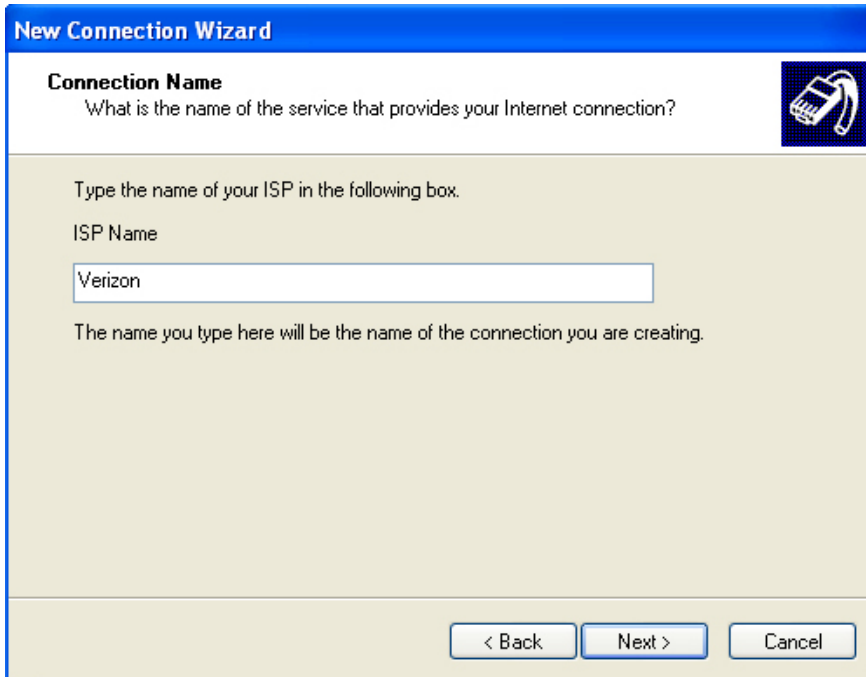
Select "Connect using a dial up modem" and click "Next"



On the Select a Device page, select your PCMCIA card you will be using to connect to the internet.



Type in the name of your Internet Service Provider eg: Verizon and click "Next"



**New Connection Wizard**

**Connection Name**  
What is the name of the service that provides your Internet connection?

Type the name of your ISP in the following box.

ISP Name

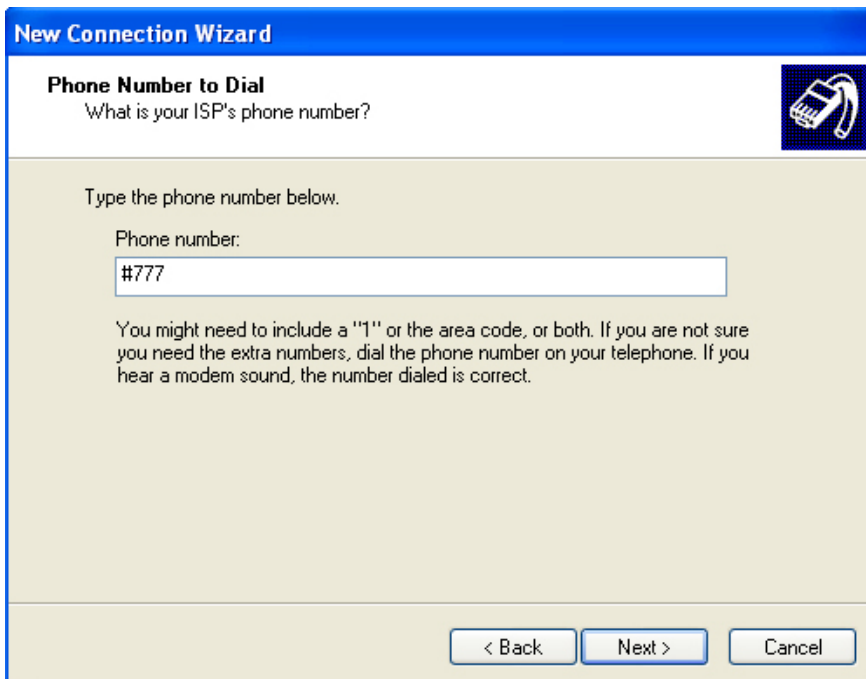
Verizon

The name you type here will be the name of the connection you are creating.

< Back   Next >   Cancel

This screenshot shows the 'New Connection Wizard' window at the 'Connection Name' step. The title bar reads 'New Connection Wizard'. Below the title bar, the section is titled 'Connection Name' with the question 'What is the name of the service that provides your Internet connection?'. A small icon of a modem is in the top right corner. The main area contains the instruction 'Type the name of your ISP in the following box.' followed by 'ISP Name' and a text input field containing 'Verizon'. Below the input field, it says 'The name you type here will be the name of the connection you are creating.' At the bottom, there are three buttons: '< Back', 'Next >', and 'Cancel'.

Enter in the phone number needed for your Internet Service Provider eg: Verizon is #777



**New Connection Wizard**

**Phone Number to Dial**  
What is your ISP's phone number?

Type the phone number below.

Phone number:


#777

You might need to include a "1" or the area code, or both. If you are not sure you need the extra numbers, dial the phone number on your telephone. If you hear a modem sound, the number dialed is correct.

< Back   Next >   Cancel

This screenshot shows the 'New Connection Wizard' window at the 'Phone Number to Dial' step. The title bar reads 'New Connection Wizard'. Below the title bar, the section is titled 'Phone Number to Dial' with the question 'What is your ISP's phone number?'. A small icon of a modem is in the top right corner. The main area contains the instruction 'Type the phone number below.' followed by 'Phone number:' and a text input field containing '#777'. Below the input field, it says 'You might need to include a "1" or the area code, or both. If you are not sure you need the extra numbers, dial the phone number on your telephone. If you hear a modem sound, the number dialed is correct.' At the bottom, there are three buttons: '< Back', 'Next >', and 'Cancel'.

Enter the correct Username and Password for your Internet Service Provider and click "Next", and "Finish" on the final dialog box.



**New Connection Wizard**

**Internet Account Information**  
You will need an account name and password to sign in to your Internet account.

Type an ISP account name and password, then write down this information and store it in a safe place. (If you have forgotten an existing account name or password, contact your ISP.)

User name:

Password:

Confirm password:

Use this account name and password when anyone connects to the Internet from this computer

Make this the default Internet connection

Turn on Internet Connection Firewall for this connection

< Back   Next >   Cancel

**Username:**  
Your cell phone  
[number@vzw3g.com](mailto:3305551234@vzw3g.com)

**Password:**  
VZW

**Confirm password:**  
VZW

After clicking Finish, the Connect Dialog will pop up. Click Dial to make the connection.



**Connect ISP Name**

User name:

Password:

Save this user name and password for the following users:

Me only

Anyone who uses this computer

Dial:

Dial   Cancel   Properties   Help