



FreedomUSB Series PCD-U

FLASH CARD READER/WRITER

Users Manual

**FLASH CARD READER/WRITER
FOR PERSONAL COMPUTERS**

QUATECH, Inc.
662 Wolf Ledges Pkwy
Akron, Ohio 44311

TEL: (330) 434-3154
FAX: (330) 434-1409
<http://www.quatech.com>

**PCD-U
User's Manual
Revision 1.0
PN 940-0161-100**

Warranty Information

Quatech Inc. warrants the PCD-U to be free of defects for **one (1) year** from the date of purchase. Quatech Inc. will repair or replace any system component that fails to perform under normal operating conditions in accordance with the procedures outlined in this document, provided the failure occurs during the one year warranty period. Any damage resulting from improper installation, operation or general misuse voids all warranty rights. No representation is made regarding the suitability of this product for any particular purpose.

Please complete the following information and retain for your records.

Date of Purchase: _____

Model Number: PCD-U

Product: Flash Card Reader/Writer

Serial Number: _____

All products returned to Quatech for either warranty or non-warranty repair **MUST** be assigned a Returned Material Authorization (RMA) number prior to shipment. This RMA number must be clearly marked on the exterior of the product's return packaging and in any correspondence to ensure proper routing and prompt attention. To obtain an RMA number, contact the Quatech Technical Support Department at 1-800-553-1170 or (330) 434-3154. In order to prevent damage to returned merchandise during shipment, please package electronic components in anti-static/shock proof materials.

For **warranty** repair/returns, please have the following information available when contacting the Technical Support department:

1. Model number and serial number of the product under warranty,
2. Repair instructions and/or specific description of the problem.

For **non-warranty** repairs or upgrades, contact the Technical Support department for current repair charges and please have the following information available:

1. Purchase order number to cover the cost of the service,
2. Model number and serial number of the product,
3. Repair or upgrade instructions relative to the product.

Notice

The information contained in this document cannot be reproduced in any form without the written consent of Quatech Inc. Any software programs accompanying this document can be used only in accordance with any licensing agreement(s) between the purchaser and Quatech Inc. Quatech Inc. reserves the right to change this documentation or the product to which it refers at any time and without notice.

The authors have taken due care in the preparation of this document and any associated software program(s). Every attempt has been made to ensure accuracy and completeness. Under no circumstances will Quatech Inc. be liable for damages of any kind, incidental or consequential, in regard to or arising from the performance or form of the materials presented herein or in any software program(s) that may accompany this document.

Quatech Inc. encourages and appreciates feedback concerning this document. Please send any written comments to the Technical Support Department at the address listed on the cover of this manual.

Table of Contents

1. Introduction	7
2. Installation	8
2.1 Using the “Add New Hardware” Wizard	8
3. Operation	14
3.1 Device Status Indicators	14
3.2 Using the PCD-U	15
6. Specifications	23

List of Figures and Tables

Figure 1-1	PCD-U Card Reader/Writer	8
Figure 2-1.1	Add New Hardware Dialog Window #1	9
Figure 2-1.2	Add New Hardware Dialog Window #2	10
Figure 2-1.3	Add New Hardware Dialog Window #3	10
Figure 2-1.4	Add New Hardware Dialog Window #4	12
Figure 2-1.5	Removable Disks in Windows Explorer	13
Figure 3-1.1	PCD-U Slot Identification	14
Figure 3-1.2	LED Indicators	14

1. Introduction

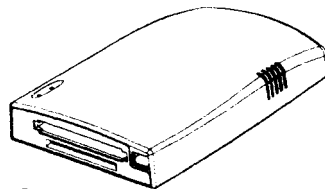
Part of the FreedomUSB Series, Quatech's PCD-U USB Card Reader/Writer implements the latest technology advancements in the PC industry. The PCD-U features USB technology to offer convenient, high-speed access to a variety of data storage cards.

The PCD-U features include:

- High-speed USB interface to storage cards
- Data transfer rates up to 1.5 MB/sec
- USB port power supply- no power supply adapter required
- Hot-swapping - dynamic plug-in and removal to/from USB port without having to reboot
- SmartMedia[®] card support
- Type I, Type II PC Card ATA Flash/Compact Flash Card support
- Operating Systems: Windows 98[®] & Windows 2000[®]

Package Contents:

- PCD-U: USB Card Reader/Writer Unit (with connected USB cable) See Figure 1-1.
- Setup disk
- User's Manual



PCD-U

Figure 1-1. PCD-U Card Reader / Writer

If the package does not include all of the items listed above, please notify Quatech for immediate replacement.

2. Installation

2.1 Using the Add New Hardware Wizard

The following procedures are step-by-step instructions for installing the Quatech PCD-U adapter under Windows 98^o or Windows 2000^o using the “Add New Hardware” wizard.

1. Turn on the computer and boot up the Windows 98^o or Windows 2000^o operating system.
2. Plug the wide flat end of the USB cable into the downstream connector located on the back of the computer or USB hub.
3. Once the cable is connected to the USB box, the “Add New Hardware Wizard” dialog window shown in Figure 2-1.1 should appear.



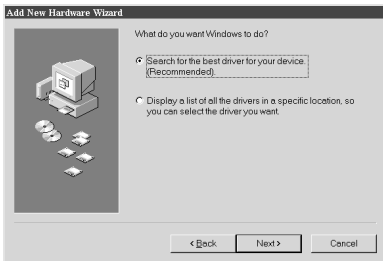
Windows 98



Windows 2000

Figure 2-1.1 Add New Hardware Dialog Window #1

4. Insert the setup disk provided with your hardware into the system's floppy drive and press the **'Next'** button to proceed to the dialog window shown in Figure 2-1.2.



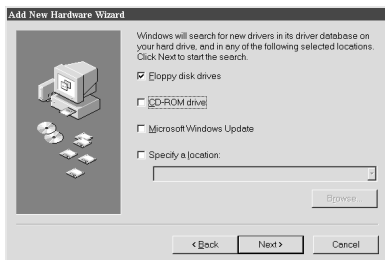
Windows 98



Windows 2000

Figure 2-1.2 Add New Hardware Dialog Window #2

5. Select the recommended option: **'Search for the best driver for your device'** and then press the **'Next'** button to proceed to the dialog window shown in Figure 2-1.3.



Windows 98



Windows 2000

Figure 2-1.3 Add New Hardware Dialog Window #3

6. Select the **'Floppy Disk Drives'** check box and click the **'Next'** button to proceed to the dialog window shown in Figure 2-1.4.



Windows 98



Windows 2000

Figure 2-1.4 Add New Hardware Dialog Window #4

7. When the dialog window shown in Figure 2-1.4 appears, click the **'Next'** button to view the final dialog window and then click **'Finish'** to complete the installation of your USB adapter.
8. Once the adapter configuration is finished, Windows 98 or Windows 2000 will then configure the Compact Flash / ATA card reader and the SmartMedia card reader which completes the hardware installation process.
9. To verify that the PCD-U is properly installed, open Windows Explorer. (Click the **Start** button and select **Program => Windows Explorer.**) In Windows Explorer, check to see that two new icons have been added under the **My Computer** directory. The drives are labeled **Removable Disk** and represent each of the two storage card sockets on the PCD-U. The PCD-U's lower socket is the first drive (Drive F in Figure 2-1.5) while the upper socket is the second. (Drive G in Figure 2-1.5).

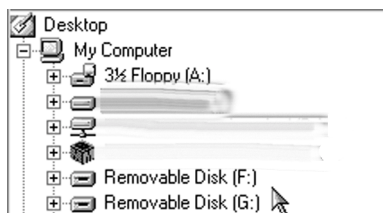


Figure 2-1.5 Removable Disks in Windows Explorer.

3. Operation

The PCD-U is easy to use. It has two slots for removable storage cards. As shown in Figure 3.1 below, the large upper slot is for the Flash cards and the smaller bottom slot is for SmartMedia™ cards.

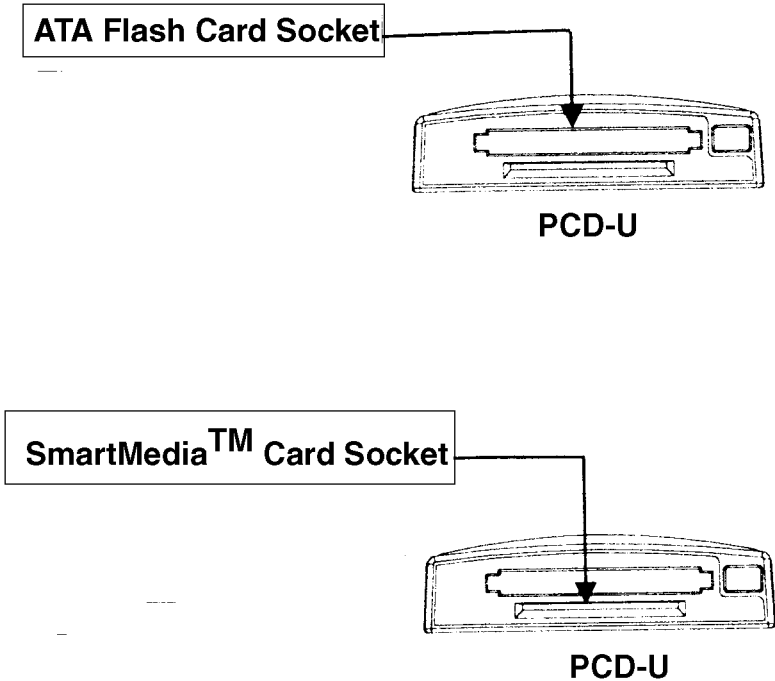


Figure 3.1. PCD-U Slot Identification

3-1 Device Status Indicators

The PCD-U has two active LED indicators located on the top of the card reader. These LEDs identify the PCD-U's status. The red LED indicates that the device is in use or busy. For example, while files are being copied from the PC hard drive to the SmartCard™ in the PCD-U, then the red LED flashes. The green LED indicates that the PCD-U is receiving adequate power from the USB port. See Figure 3-1.1.

Warning: Do NOT remove the data storage card while the red LED is flashing.

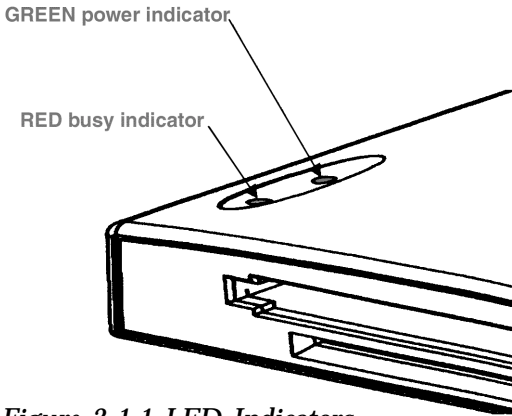


Figure 3-1.1 LED Indicators

3.2 Using the PCD-U

Once the PCD-U is completely installed, it can be used to transfer files from the data storage card to a computer or laptop. Operation instructions are provided below.

1. Insert your data storage card into the PCD-U. For ATA/Compact Flash cards, insert them into the top slot of the device. For SmartMedia[™] cards, insert them into the bottom slot of the device. Be sure to insert the SmartMedia[™] card with the gold plate facing down.
2. Open **My Computer** or **Windows Explorer**.
3. Locate the **Removable Disk** icons. Double click any one.
4. Explore images and files on the data storage cards. Access images and files in the same manner as files are accessed on the PC hard disk drive.

6. Specifications

Bus Interface	USB Specification 1.1
Data Rates	1.5 MB/sec
Sockets	1 SmartMedia™ card socket 1 PC Card ATA Flash card socket
Power Requirements	USB bus powered, DC +5 volts
Temperature:	Operating: 0 to 70° C Storage: -40 to 70° C
Humidity	10 to 95 %
OS Support	Windows 98® and Windows 2000®
PC Requirements	Pentium, Pentium II USB Port