

RS232 EXTENDER



(Local)



(Remote)

USER MANUAL

V1.5

Package Contents-

- RS232 Extender Local Unit
- RS232 Extender Remote Unit
- 1 user manual
- 2 power adapter DC 9V/300mA
- 1 20cm Null Modem cable (DB-9 Male to Male)

Any thing missed, please contact with your vendor.

Features

- Compatible with all RS-232 protocols.
- Full-duplex data communication.
- Sends RS-232 data at 230 kbps up to 1000M / 3300 ft.
- Pure hardware solution - real time data transfer, no

- software conflicts.
- No external power required.
- Transfer data or files between PCs, equipments.
- One CAT-5 cable extension.

Specifications

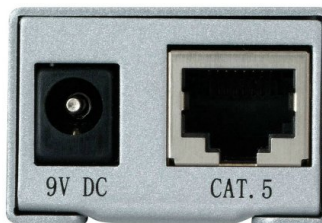
Function	RS232-L ⁺	RS232-R ⁺
RS232 Connector	DB-9 Female x1	
RJ-45 Connector	1	
Cable Distance (Max.)	1000M / 3300ft (UTP)	
Communication mode	Full-duplex data	
Power Supply	DC9V/300mA (Min.) spare	
Housing	Metal	
Weight	65 g	
Dimensions (LxWxH) mm	92x34x22	

FRONT VIEW



1. RS232 (DB-9 Female Connector)

REAR VIEW



1. Power jack
2. CAT.5 (RJ-45 Connector)

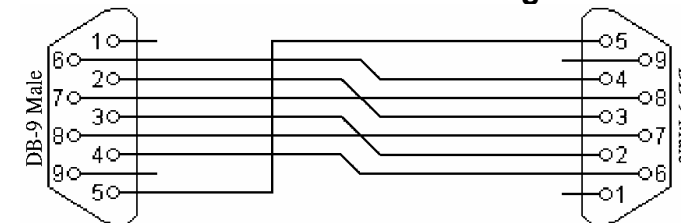
Technical Specifications

Supported RS232 DCE Signals:

PIN1	N/A
PIN2	Transmit Data
PIN3	Received Data
PIN4	N/A

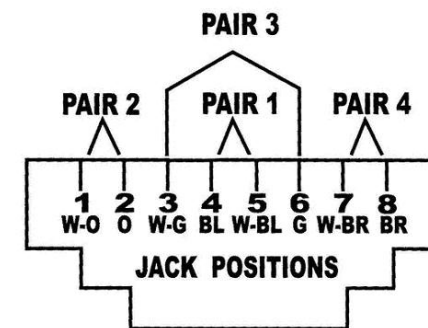
PIN5	Signal Ground
PIN6	N/A
PIN7	Clear To Send
PIN8	Request To Send
PIN9	N/A

Null modem with full handshaking:



Wiring Information & Coding:

Conductor Identification	RJ45 Pin Assignment	Color Code for Conductor
Pair 1	5	White-Blue
	4	Blue
Pair 2	1	White-Orange
	2	Orange
Pair 3	3	White-Green
	6	Green
Pair 4	7	White-Brown
	8	Brown



Trouble shooting

Q: When RS232-E⁺ does not work smoothly.

A1: Use power adapter of DC9V 300mA.

A2: Check the two Baud Rate setting of two ends, they have to accord.

A3: Refer above sheet and check if it connect RJ45 pair are correct.